

Panel & Line Regulators / Leitungs- & Paneldruckminderer

VSR-2EL & VSR-2ELP Series

Product Features

- Line and Panel pressure regulator
- Brass chrome plated body and bonnet for inert, reactive, flammable and oxidizing gas and mixtures up to grade 6.0
- Stainless steel 316L body and bonnet for corrosive gases
- 4 ports flexible configuration
- Stable outlet pressure
- Simple outlet pressure limitation by handwheel
- Inlet filler
- Tested for use with oxygen



Typical Applications

- Component Testing
- Calibration Systems
- Laboratory Pressure Control
- High Pressure Sampling Systems
- Service & Test Equipment

VSR-2EL

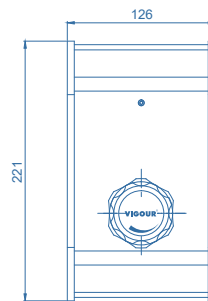
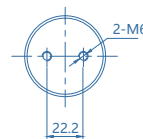
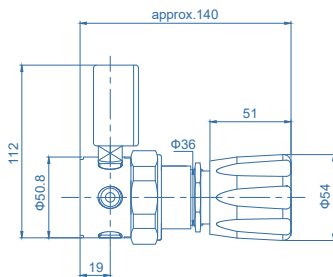


VSR-2ELP

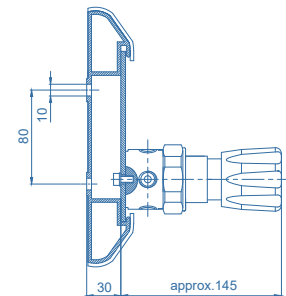


Mounting panel
Model No. : VSR-T-BPB

Dimensions (mm)



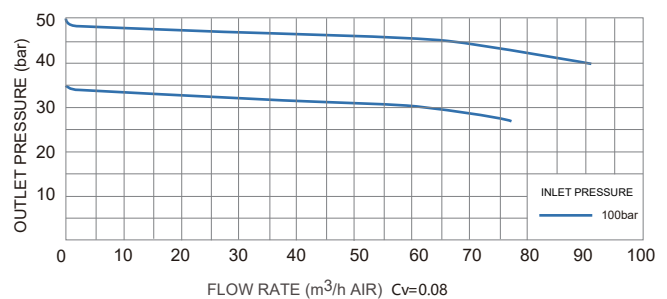
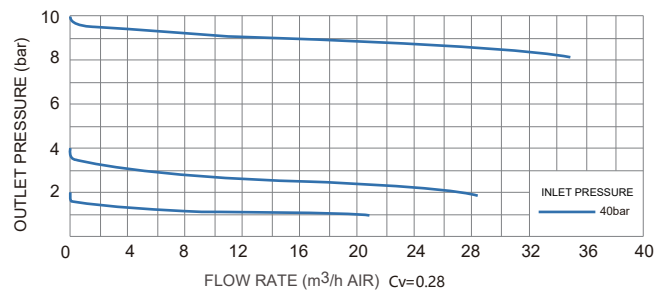
Panel mounting



Technical Data

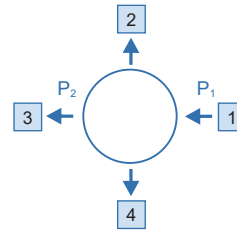
Type:	single-stage
Inlet pressure P ₁ :	max. 100 bar
Outlet pressure P ₂ :	VAC/2/4/8/10/20/35/50 bar
Materials	
Body regulator:	see ordering info
Valve seat:	PCTFE
Diaphragm:	Hastelloy® C276
O-ring:	Viton® (FKM)
(option)	Kalrez® (FFKM)
Filter:	SS 316L
Inlets and Outlets:	1/4" NPT(F)
Temperature range:	-30°C to +74°C
Leak rate: (to atmosphere)	1x10 ⁻⁸ mbar l/s He
(Via seat)	1x10 ⁻⁶ mbar l/s He
Flow capacity: (P ₂ =35/50 bar)	Cv=0.08
(P ₂ =2/4/10/20 bar)	Cv=0.28
Weight:	1.25kg

Flow Chart



Leitungs- & Paneldruckminderer / Panel & Line Regulators VSR-2EL & VSR-2ELP Series

Ordering Information



Inlets / Outlets

F4: 1/4" NPT(F)	02: 1/8" Tube fitting	8M: 8mm Tube fitting
M4: 1/4" NPT(M)	04: 1/4" Tube fitting	TW12M: 12mm Weld tube
F6: 3/8" NPT(F)	06: 3/8" Tube fitting	P: Gauge (Psig/bar)
M6: 3/8" NPT(M)	6M: 6mm Tube fitting	B: Plug

* Other connection standard, consult factory.

Port Selection

VSR - 2EL S -100 -20 - 1 - 2 - 3 - 4 - N2

Type

L: Line
LP: Panel

Body Material

S: 316L
C: Chrome Plated Brass

Inlet Pressure P₁

40: 40 bar
100: 100 bar

Outlet Pressure P₂

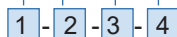
2: to 2 bar
4: to 4 bar
8: to 8 bar
10: to 10 bar
20: to 20 bar
35: to 35 bar
50: to 50 bar
V2: -1 bar to 2 bar
V4: -1 bar to 4 bar
V10: -1 bar to 10 bar
V20: -1 bar to 20 bar

Type of Gas

Please specify type of gas

Ordering Example

Example: VSR - 2EL C - 100 - 20 - F4 - P - F4 - B - O₂



* For mixed gases, please specify cylinder connection standard and thread when ordering.