

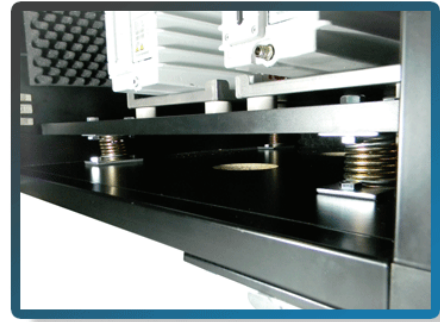
派艾斯科技有限公司

色谱/质谱工作台系列

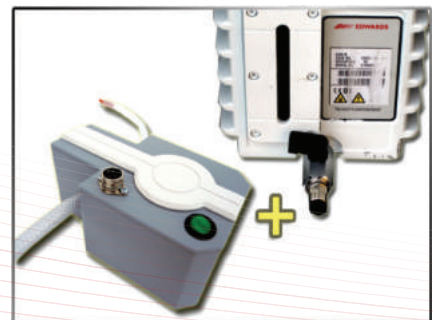
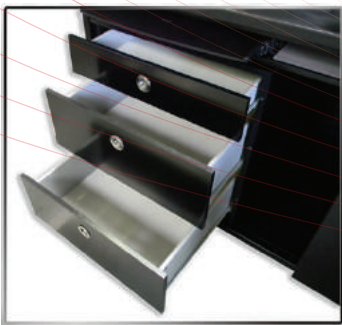
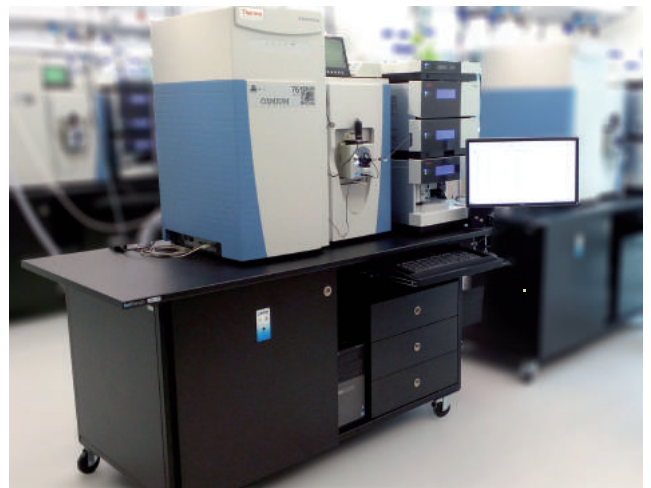


减噪效果达到75%-80%

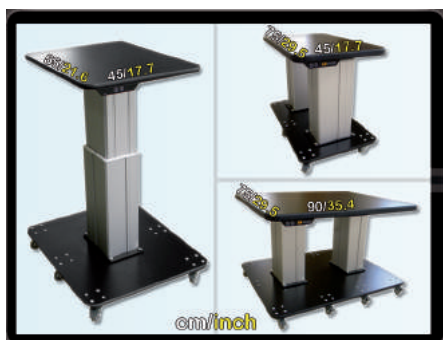
超温报警



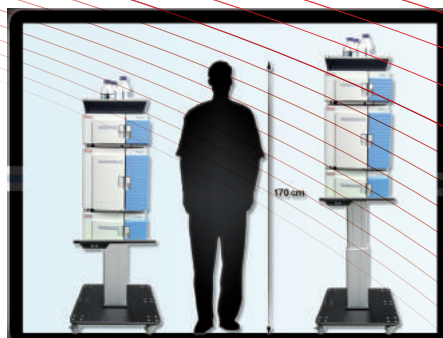
专利减震设计，减震>99%



可选扩展项



多种规格适用不同色谱



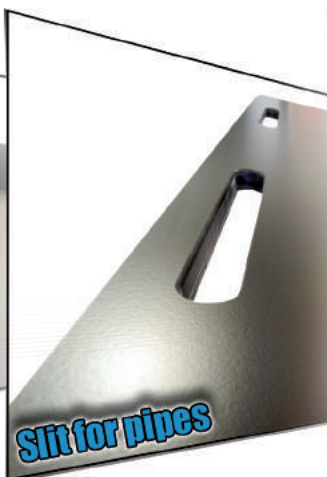
调整不同高度，减少死体积，便于操作



IEC power strip



Handles



Slit for pipes



Solvent waste container

工作台型号对照表

工作台型号	台面尺寸	适用机型
BCH120NE58	120*88cm	适用于单个机械泵或两台 Edwards EM 系列机械泵质谱
BCH120NE78	120*88cm	适用于两台机械泵（ Varian MS40, Leybold SV65 , Edwards XDS35i）质谱
BCH190NE58	190*88cm	适用于单个机械泵或两台 Edwards EM 系列机械泵质谱联用仪
BCH190NE78	190*88cm	适用于两台机械泵（ Varian MS40, Leybold SV65 , Edwards XDS35i）质谱联用仪
BCHLC4555	45*55cm	Agilent 1100/1200/1290, Dionex Ultimate 3000, Jasco HPLC, PerkinElmer Flexar, ExionLC 100 system, Shimadzu Prominence-i GPC, Shimadzu Nexera-i UHPLC,
BCHLC4575	45*75cm	PerkinElmer Altus, Waters Acquity, HPLC Waters Acquity Arc
BCHLC9075	90*75cm	
BCHLC6765	67*65cm	Eksigent Ekspert UltraLC 110 system, ExionLC AD system, Shimadzu Nexera MP UHPLC, Thermo UHPLC Vanquish,
IonLC-Desk10080-EU	100*80cm	
IonLC-Desk12080-EU	120*80cm	
IonLC-Desk14080-EU	140*80cm	

*型号更新恕不另行通知。如有不在此表范围中的机型或需定做，请来电咨询。



北京派艾斯科技有限公司

地址：北京市海淀区学院路20号炼化楼310

电话：010-62310021

电子邮件：Info@paastech.com